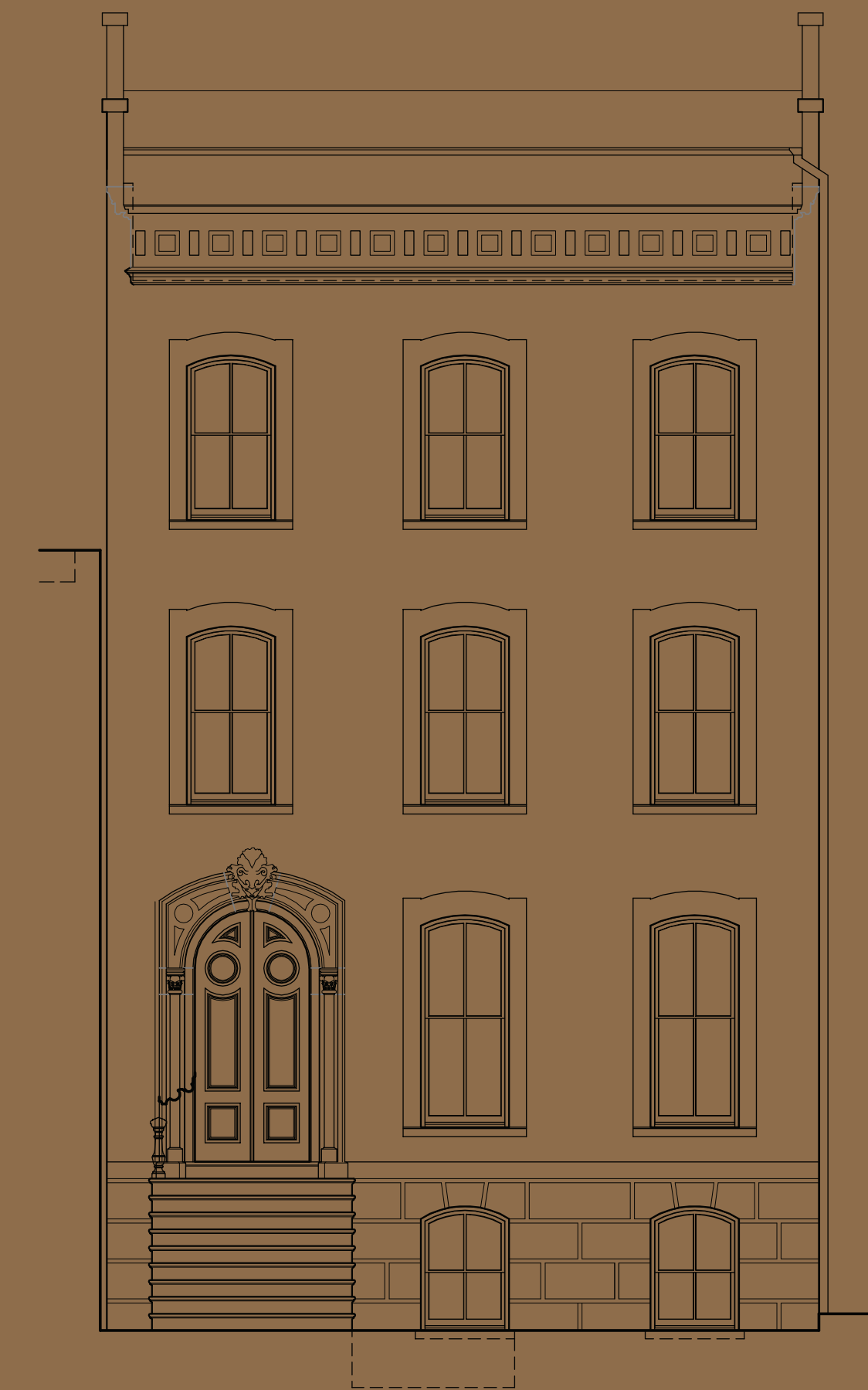
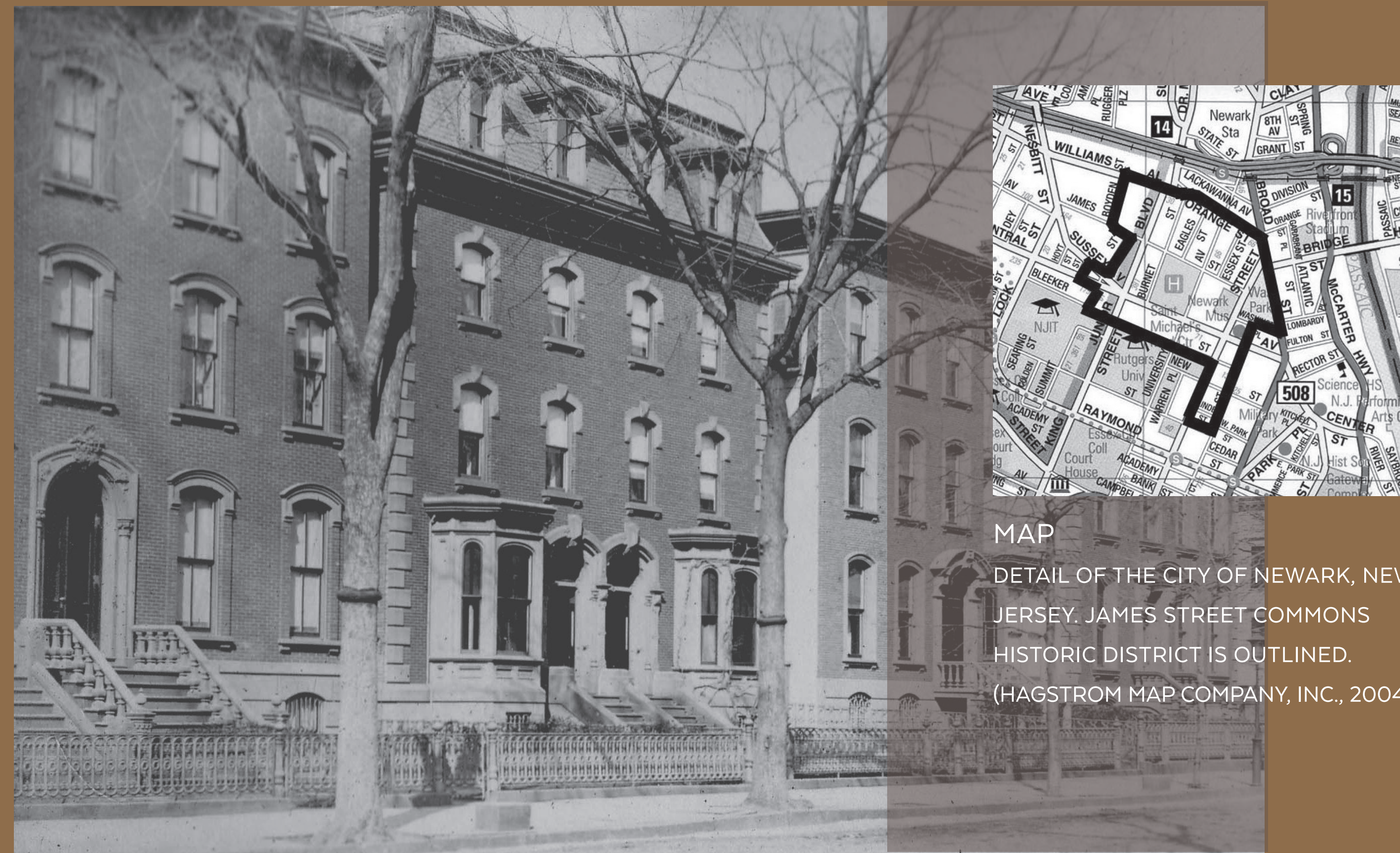


Former Site of a 19th Century Town House



HOUSE
EAST ELEVATION, 1948. (COURTESY BCA)



MAP
DETAIL OF THE CITY OF NEWARK, NEW JERSEY. JAMES STREET COMMONS HISTORIC DISTRICT IS OUTLINED. (HAGSTROM MAP COMPANY, INC., 2004)

WASHINGTON ST.
RESIDENCES ALONG WASHINGTON STREET, 1891. THE POLHEMUS HOUSE IS AT THE FAR LEFT. (COLLECTION OF THE NEW JERSEY HISTORICAL SOCIETY)

OVERVIEW

The Polhemus House formerly stood here on The Newark Museum of Art's campus. It was part of the James Street Commons Historic District and listed in the New Jersey National Registers of Historic Places. From its completion in 1863 until 1948, the house was owned by the Polhemus family. Upon its sale for commercial use, it was the last remaining 19th century town house on Washington Park.

ARCHITECTURE

The Polhemus House was built in the Italianate style, fashionable between 1840 and 1870. It is characterized by elaborate, bold, projecting exterior ornament, with an emphasis on repetitive forms. Victorian-era homes such as this were organized into public and private zones. Public areas were typically the most elaborately designed, while the private spaces, accessible only to the family and servants were far less extravagant. These included bedrooms, bathrooms, and kitchens. The Parlor or first-floor level was intended to be the most public space in the house.

HOUSE & FAMILY

The Polhemus House was constructed between 1860 and 1863 for Eliza Polhemus, the widow of Abraham Polhemus. She raised seven of her nine children there. In 1883 Eliza sold the house to doctor and merchant Charles K. Wagner and his wife Elizabeth Callen Wagner. The Wagner's daughter, Ida Bell Wagner, shortly thereafter married Eliza's son James Suydam Polhemus, thereby keeping the house in the family name.



ELIZA BRODHEAD HEYER POLHEMUS
1815-1901. 1863-1883 WIDOW OF REV. ABRAHAM POLHEMUS. (CREDIT?)



PARLOR ROOM
PARLOR, LOOKING EAST TOWARDS FRONT OF HOUSE, 1948. (HALSEY DOUGLAS; COLLECTION OF THE NEWARK MUSEUM OF ART)



DINING ROOM
DINING ROOM, LOOKING WEST, 1948. (HALSEY DOUGLAS; COLLECTION OF THE NEWARK MUSEUM OF ART)



PARLOR ROOM
PHOTO PARLOR LOOKING WEST TOWARDS DINING ROOM, 1948. (HALSEY DOUGLAS; COLLECTION OF THE NEWARK MUSEUM OF ART)